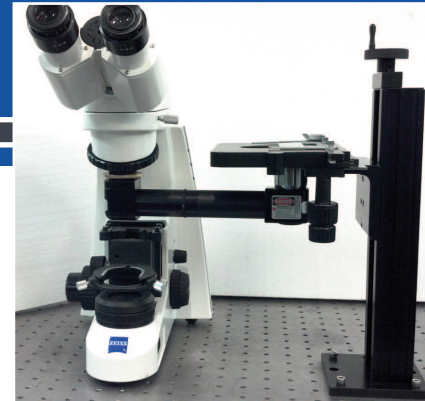


InverterScope[®] objective inverter

INSTALLATION MANUAL:

1. Turn off the microscope.
2. Remove the objective from the microscope.
3. Install the InverterScope[®] objective inverter into the objective hole in the microscope (objective turret). Rotate the brass ring to rotate the vertical tube while supporting the horizontal tube to install (as well as remove) the unit.
4. Install the objective into the opposite end of the InverterScope[®] objective inverter.
5. Installation is complete.
6. Turn on the microscope.

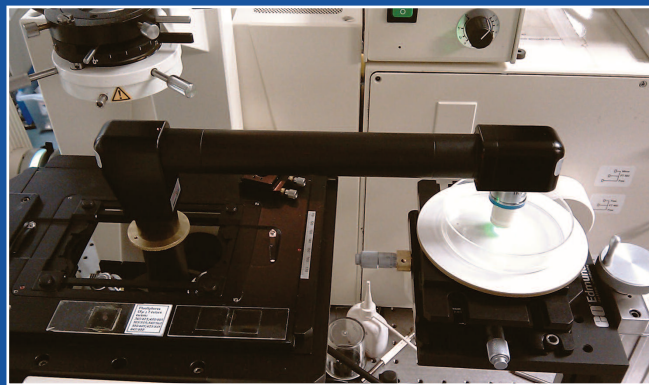
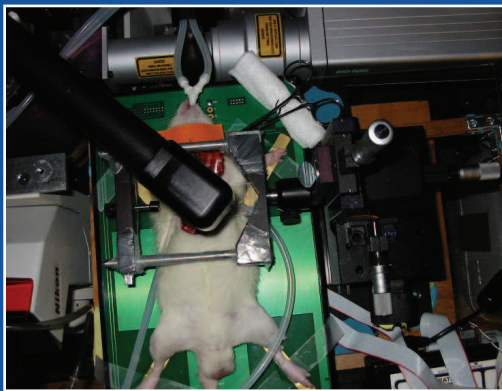
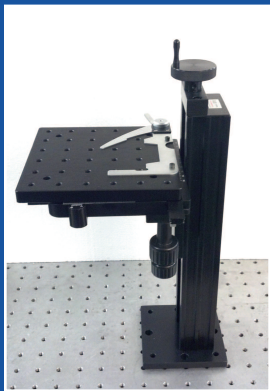


NOTES:

- Never point the objective at yourself or someone else.
- Reinstall the dust caps when the InverterScope® objective inverter is not in use.
- Do not attempt to disassemble, adjust or align the InverterScope® objective inverter. This is a critically aligned optical device and contains no user-serviceable components.
- Do not touch or attempt to clean the prism or anything inside the device.
- This product may be used on any infinity corrected microscope when fitted with the proper thread adapters. (RMS, M25, M27, M32, M34) The InverterScope® objective inverter can allow you to mount objectives with thread sizes that do not match your objective turret. The objectives must be infinity corrected. Although not harmful to the microscope or the InverterScope® objective inverter, chromatic or spherical aberration corrections may be compromised to a degree due to tube lens mismatch but acceptable results may still be achieved.
- Although there are no lasers, light sources or electrical devices in the InverterScope® objective inverter, it allows the end user to redirect visible and invisible light including lasers when used on a laser microscope.
- NEVER activate a light source or laser without an objective installed on the InverterScope® objective inverter or while installing and removing the device. All lasers and light sources should be off until the objective is positioned in close proximity and towards the sample or object you intend to image.
- View the InverterScope® objective inverter installation video at: <http://youtu.be/sOPu2MhsW-0>

Questions/Concerns:

service@ismtech.com
717-938-4643



 **LSM TECH**
www.lsmtech.com

100 Mountain View Dr.
Etters, PA 17319 U.S.A.
Phone 717-938-4643
Fax 717-938-4588

InverterScope® objective inverter

LIMITED WARRANTY AND LIABILITY

LSM Tech, LLC warrants to the original purchaser only, the InverterScope® objective inverter against defects in material and workmanship for one year from the date of purchase. The Limited Warranty applies only to the original purchaser of the product and is limited solely to the repair or replacement of the product, to be decided in LSM Tech's sole discretion. Consequential damages, including modifications to the InverterScope® objective inverter and opening of the InverterScope® objective inverter, are not covered under this warranty. This Warranty will be declared invalid should the purchaser modify or repair the product themselves or by unauthorized persons, use the product in contravention of LSM Tech's instructions, abuse the product in any way, or through accident or negligence. Should you encounter a problem with this product, all Warranty claims must be made directly to LSM Tech, LLC. A customer service representative may be reached at 717-938-4643 or at service@lsmtech.com. You may be asked to return the product for inspection and/or repair. For shipping the unit: the InverterScope® objective inverter must be placed into its original black case and double boxed. The black case, which

is provided, is a carrying case and is not a shipping case. Place the black case into a box with packing material around it and into another outer box.

Acceptance of receipt of this product is to be legally bound and customer agrees and does hereby release from liability and to indemnify and hold harmless LSM TECH, LLC, and any of its employees or agents representing or related to LSM TECH, LLC in regards to the use of the objective inverter or any of its components. This release is for any and all liability for personal injuries and property losses or damage occasioned by, or in connection with any use of this product.

